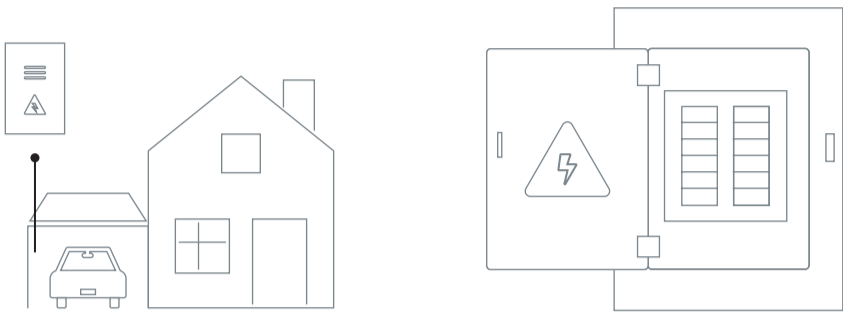


HARDWARE INSTALLATION

Our E2 Classic is simple to install and use. A CT sensor is clipped onto the live feed cable of your breaker panel. A lead from the sensor is connected to the efergy transmitter. This transmitter wirelessly sends real-time data to the energy monitor. The display will then show you how much energy you are using in the same units that are on your bill.

1. Find the Main Feed Wires

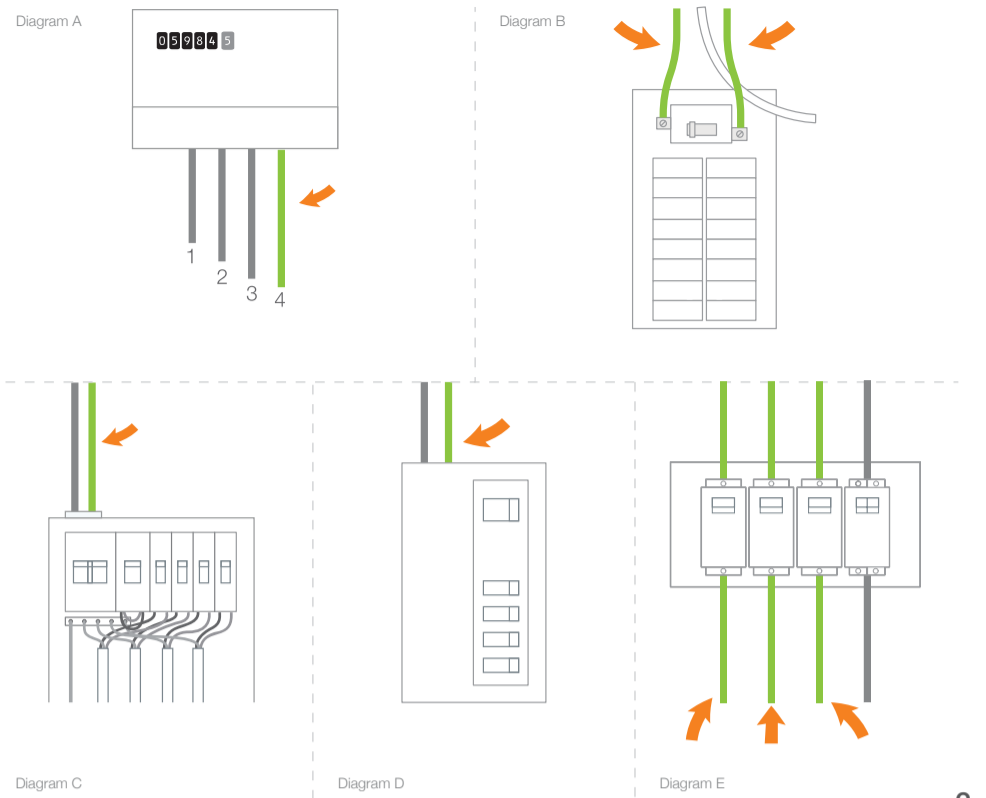


You can normally find your main electrical panel inside your home on the other side of the wall from your electric utility meter.

Remove the outside cover from your electrical panel and locate the main feed wires. You should find up to four feed wires entering your main electrical panel.

1

Common electrical panels



2

2. Install the sensor(s) and transmitter



Place the sensors around the feed wires of your electric panel. Pull the clasp to open the sensor, place it around the feed cable and push the clasp to shut.

Insert the sensors jack into the base of the transmitter. Make sure you insert the sensor(s) jack first, then power on the Transmitter.

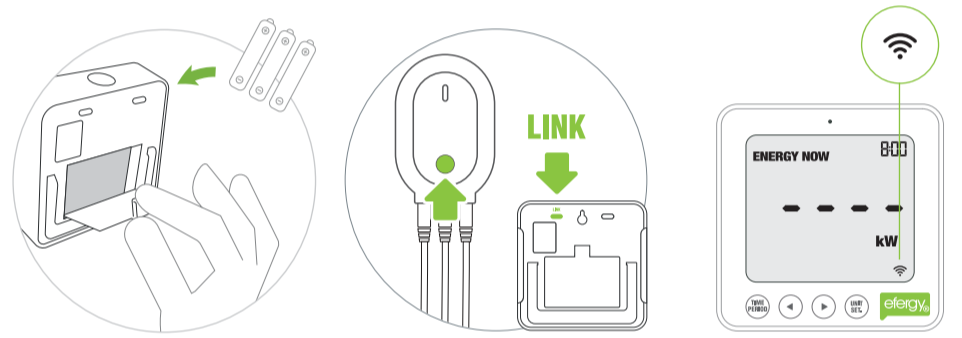
Open the Transmitter case and insert three AA batteries (not provided). Mount the transmitter on the wall next to or above the electric panel.

⚠ EFERGY RECOMMENDS THAT INSTALLATION IS CARRIED OUT BY A QUALIFIED ELECTRICIAN


ⓘ Efergy recommends high quality alkaline or lithium batteries for the best product performance. Battery life will depend on environment (up to 12 months).


3

3. Link the transmitter and monitor



Insert 3 AAA batteries into the battery compartment located on the back of the monitor (make sure you match the negative and positive ends of the batteries with the markings inside).

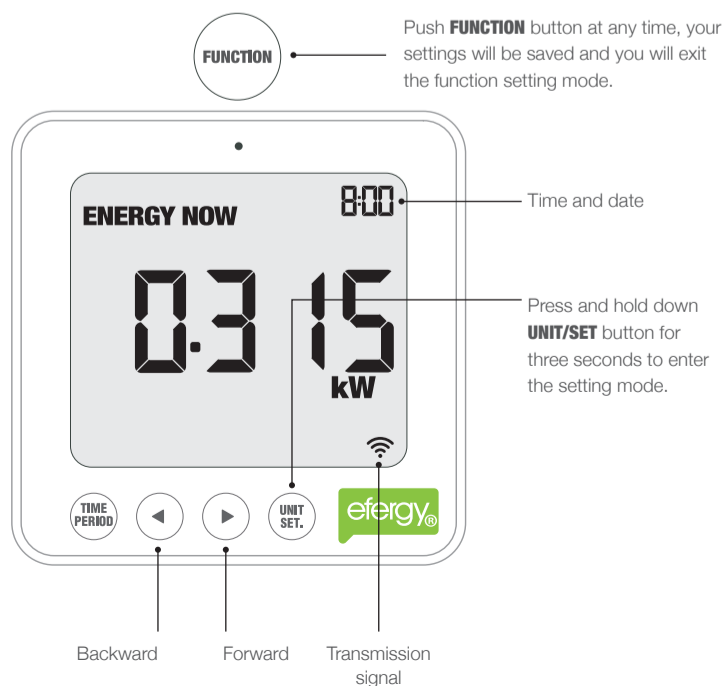
Press the **LINK** button on the back of the monitor and hold for two seconds. The transmission signal symbol  will flash for one minute or until the transmitter and monitor are linked.

While the transmission signal symbol  in the display flashes, push the button on the transmitter and wait until the transmission signal symbol becomes solid.

4

MONITOR SET UP



The monitor needs to know the time, date, unit cost per kWh charged by your electricity supplier, along with voltage and alarm settings. The following steps will move through each of these settings.





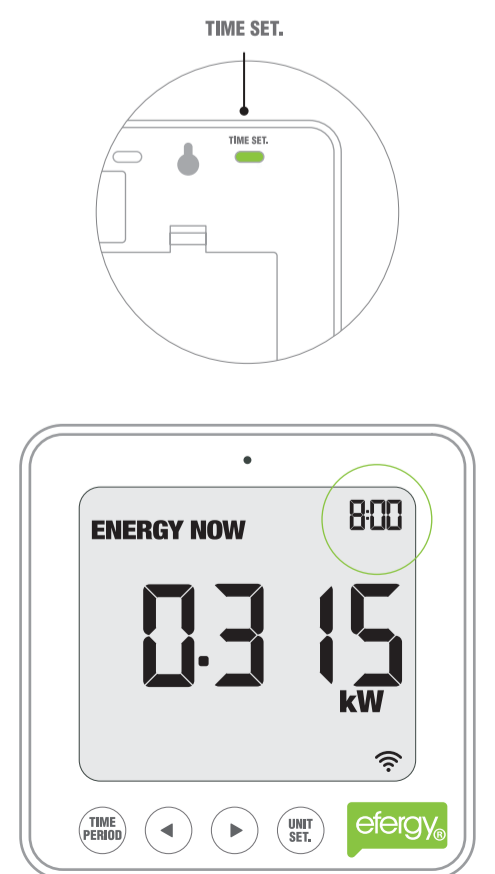
5

Setting time and date

Press and hold for 2 seconds the **TIME SET.** button located on the reverse of the monitor. The time setup will flash on the display.

Use the backward  and forward  buttons to set the hour. Press the **UNIT SET.** button once to save. Repeat the same process to set the minutes. Once the correct time and date have been set, push the **UNIT SET.** button to save and move onto the date setup.

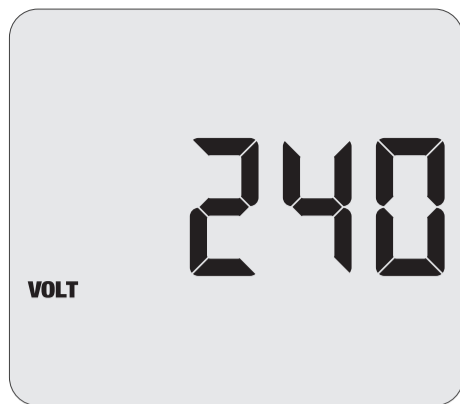
Set the month by using the **BACKWARD**  and **FORWARD**  buttons. Press the **UNIT SET.** and move onto the day and year. Repeat the same process and then press the **UNIT SET.** button to save and exit.



6

⚡ Voltage

Press and hold the **UNIT SET.** button for 2 seconds. Adjust the voltage using the backward ◀ and forward ▶ buttons. Push **UNIT SET.** button to confirm and to move onto currency selection set up.



💰 Currency

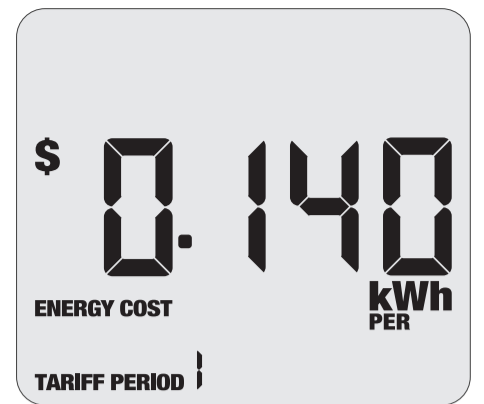
There are 5 different world currencies available (£, €, \$, Kr, R). Press and hold the **UNIT SET.** button for 2 seconds. Select the currency using the backward ◀ and forward ▶ buttons. Default currency will be \$. Push **UNIT SET.** button to confirm and to move onto tariff selection set up.



7

📅 Tariff period

Select up to 4 different tariff cost settings. You will note that the words **TARIFF PERIOD 1** will appear. The **1** represents the tariff selected. Use the backward ◀ and forward ▶ buttons to choose between tariff periods, then press the **UNIT SET.** button to confirm and will move to set tariff pricing.



📊 Tariff pricing

Use the backward ◀ and forward ▶ buttons to increase or decrease the cost and press the **UNIT SET.** button to confirm.

🏠 KgCO2

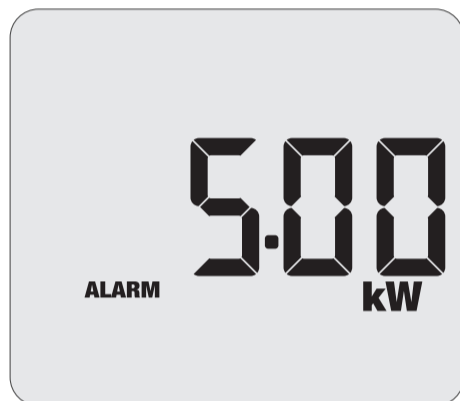
By default the carbon emissions ratio is 0.50 KgCO2. Use the backward ◀ and forward ▶ buttons to increase or decrease the value and press the **UNIT SET.** button to confirm.



8

🔔 Maximum power alert

The audio alert will sound if you go over your set maximum power consumption target. Use the backward ◀ and forward ▶ buttons to increase or decrease the value and press the **UNIT SET.** button to confirm. Press **UNIT SET.** button to move onto **ENERGY NOW.**



🔄 Multiple tariff

You will only need to use this setting if you have dual or multiple tariffs

Press and hold the **UNIT SET.** button for 2 seconds. Press the **UNIT SET.** button two more times to find the tariff mode. Use the backward ◀ and forward ▶ buttons to choose between tariff periods **1, 2, 3** or **4**. Press the **UNIT SET.** button to confirm and will move to set the start and end of the tariff period. Use the backward ◀ and forward ▶ buttons to set the start time for tariff. Press the **UNIT SET.** button to set the end of the tariff using the backward ◀ and forward ▶ buttons again. Press the **UNIT SET.** button to finish. Repeat this process to configure each tariff period.

9



The E2 Classic comes with the Elink Energy Management Software, which will enable you to export data, analyse it and learn how you can save money.

To download the Elink Software go to: efergy.com > Support > E2 > Software



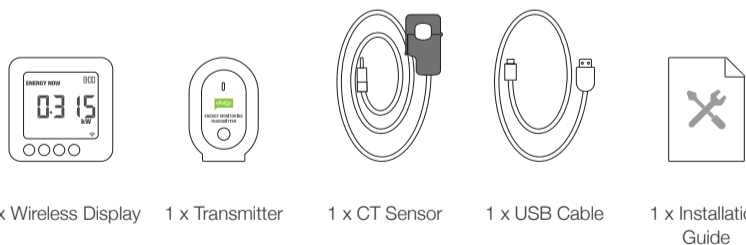
TECHNICAL INFORMATION



Model Name	e2 classic	Transmission Range	110-600V
Model Number	E2-3.0	Measuring Current	50mA-90A
Frequency	433.5MHz	Accuracy	>90%
Transmission Time	10s	Dimensions	86x24x86mm

10

WHAT'S IN THE BOX



CUSTOMER SUPPORT

If you have any questions about using your monitor or if you'd like further advice on monitoring electricity at home, please feel free to contact us or visit the website for up-to-date information, downloads and frequently asked questions.

- 🌐 Website: www.efergy.com
- 🔍 Support site: www.efergy.com/support
- ✉️ Technical support: customercare@efergy.com
- 🏢 Sales: sales@efergy.com

11



E2 Classic
Installation guide